



### Description and Features

The G80/1 is a passive piezoelectric AE sensor with narrowband. High protecting grade makes it possible to work in the water or underground. And 20kHz-180kHz bandwidth makes it well suited for detecting low frequency acoustic emission signals. It belongs to the low and medium frequency sensor.

### Technical Specs

Resonant Freq. Ref V/(m/s)	80kHz
Frequency Range	20kHz-180kHz
Sensitivity Peak Ref V/(m/s)	>70dB
Working Temp.	-20 to 120°C
Size (DxH)	19×19.5mm
Weight	59g
Case Material	SUS-304
Face Material	Ceramic
Protecting Grade	IP68
Connector	BNC on integral cable
Connector Location	Side

### Applications

The low frequency response makes it suitable for monitoring large objects or objects made of highly attenuating material, such as concrete steel and geologic structures. It also could be used for monitoring leakage of pressure vessels and for detecting partial discharge.

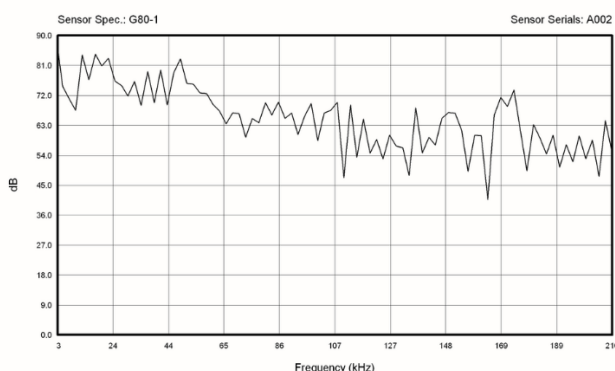
### Standards

Calibration standard	ISO12714
	GB/T 19801

### Accessories

Signal cable model	SYV-50-3/ STYV-50-2
Hold-down	M20A
Preamplifier	PAS

### AE SENSOR CALIBRATION CERTIFICATE



NOTE: Sensitivity dB ref 1V/m/s

### Certification



Qawrums Ltd.

Website: [www.aendt.com](http://www.aendt.com) Tel: +86-20-32290092 E-mail: [sales2@ae-ndt.com](mailto:sales2@ae-ndt.com) Skype: Jessicajia  
Address: Room 601-9, Building 3, 232 Kezhu Road, Huangpu District, Guangzhou City, Guangdong Province, CHINA

Specifications subject to change without notice. Copyright @ 2022 Qingcheng AE Institute. All Rights Reserved.