



### Description and Features

The G80 is a passive piezoelectric AE sensor with narrowband. Stainless steel structure makes it reliable and durable. And 20kHz-180kHz bandwidth makes it suitable for detecting low frequency acoustic emission signals. It belongs to the low and medium frequency sensor.

### Technical Specs

Resonant Freq. Ref V/(m/s)	80kHz
Frequency Range	20kHz-180kHz
Sensitivity Peak Ref V/(m/s)	>70dB
Working Temp.	-20 to 120℃
Size (DxH)	19×19.5mm
Weight	33g
Case Material	SUS-304
Face Material	Ceramic
Protecting Grade	IP62
Connector	M5
Connector Location	Side

### Accessories

Signal cable model	RG178/RG316
Hold-down	M20A
Preamplifier	PAS

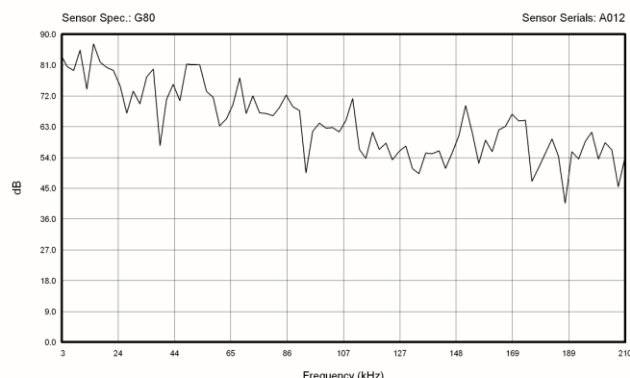
### Applications

The low frequency response makes it suitable for monitoring large objects or objects made of highly attenuating material, such as rocks or the soil. It also could be used for monitoring leakage of pressure vessels and for detecting partial discharge.

### Standards

Calibration standard	ISO12714
	GB/T 19801

### AE SENSOR CALIBRATION CERTIFICATE



NOTE: Sensitivity dB ref 1V/m/s

### Certification



Qawrums Ltd.

Website: [www.aendt.com](http://www.aendt.com) Tel: +86-20-32290092 E-mail: [sales2@ae-ndt.com](mailto:sales2@ae-ndt.com) Skype: Jessicajia  
Address: Room 601-9, Building 3, 232 Kezhu Road, Huangpu District, Guangzhou City, Guangdong Province, CHINA

Specifications subject to change without notice. Copyright @ 2022 Qingcheng AE Institute. All Rights Reserved.