



Description and Features

The GH150/2 is a medium high temperature sensor with 1.5 meters high temperature resistant cable, could be used in high temperature environment (up to 170°C).

Technical Specs

Resonant Freq. Ref V/(m/s)	150kHz
Frequency Range	60kHz-400kHz
Sensitivity Peak Ref V/(m/s)	>73dB
Working Temp.	-20 to 170°C
Size (DxH)	19x15mm
Weight	45 g
Case Material	SUS-304
Face Material	Ceramic
Protecting Grade	IP68
Connector	BNC on integral cable
Connector Location	Side



Applications

GH150/2 could be used for structural health monitoring in harsh environment, especially for the monitoring of structures like pipelines, pressure vessels and storage tanks in plants and offshore platforms.



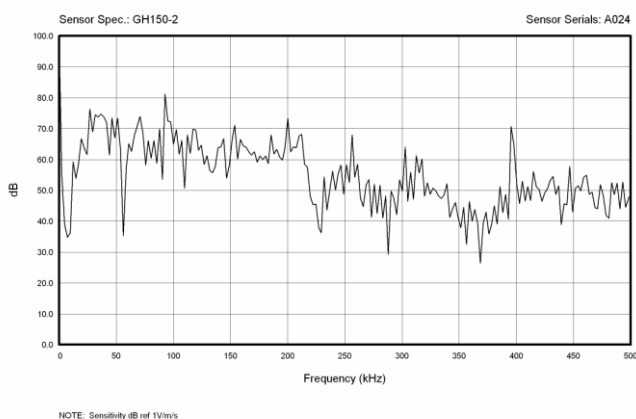
Standards

Calibration standard	ISO12714
	GB/T 19801

Accessories

Signal cable model	SYV-50-3/ STYV-50-2
Hold-down	H20
Preamplifier	PAS/PAV

AE SENSOR CALIBRATION CERTIFICATE



Certification



QingCheng AE Institute (Guangzhou) Co., Ltd

Website: www.aendt.com **Tel:** +86-20-32290092 **E-mail:** sales2@ae-ndt.com **Skype:** Jessicajia
Address: Room 601-9, Building 3, 232 Kezhu Road, Huangpu District, Guangzhou City, Guangdong Province, CHINA

Specifications subject to change without notice. Copyright @ 2022 Qingcheng AE Institute. All Rights Reserved.