

Description and Features

The GH150 is an Ultra high temperature sensor with 1-1.2 meters high temperature resistant metallic tube and 2 meters cable, shell and contact surface are stainless invar steel, could be installed in ultra high temperature environment (up to 600°C).

Technical Specs

Resonant Freq. Ref V/(m/s)	150kHz
Frequency Range	60kHz-400kHz
Sensitivity Peak Ref V/(m/s)	>60dB
Working Temp.	-20 to 600°C
Size (DxH)	19×19.5mm
Weight	125 g
Case Material	Stainless Invar Steel
Face Material	Stainless Invar Steel
Protecting Grade	IP68
Connector	BNC on integral cable
Connector Location	Side



Applications

GH150 is suitable for using in harsh environment such as nuclear power plants, and for detecting of metallic equipment like pressure vessels, tanks, pipelines etc.



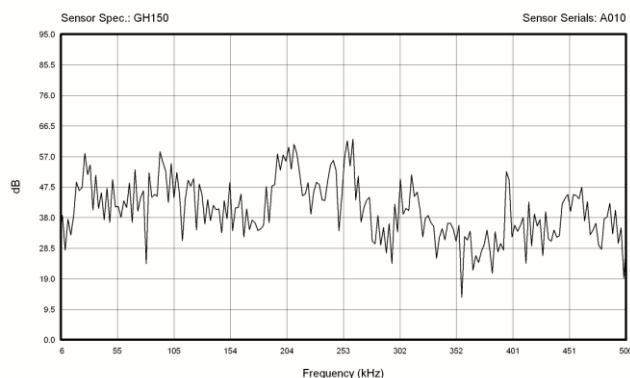
Standards

Calibration standard	ISO12714
	GB/T 19801

Accessories

Signal cable model	SYV-50-3/ STYV-50-2
Hold-down	H20
Preamplifier	PAS/PAV

AE SENSOR CALIBRATION CERTIFICATE



Certification



QingCheng AE Institute (Guangzhou) Co., Ltd

Website: www.aendt.com **Tel:** +86-20-32290092 **E-mail:** sales2@ae-ndt.com **Skype:** Jessicajia
Address: Room 601-9, Building 3, 232 Kezhu Road, Huangpu District, Guangzhou City, Guangdong Province, CHINA

Specifications subject to change without notice. Copyright @ 2022 Qingcheng AE Institute. All Rights Reserved.